



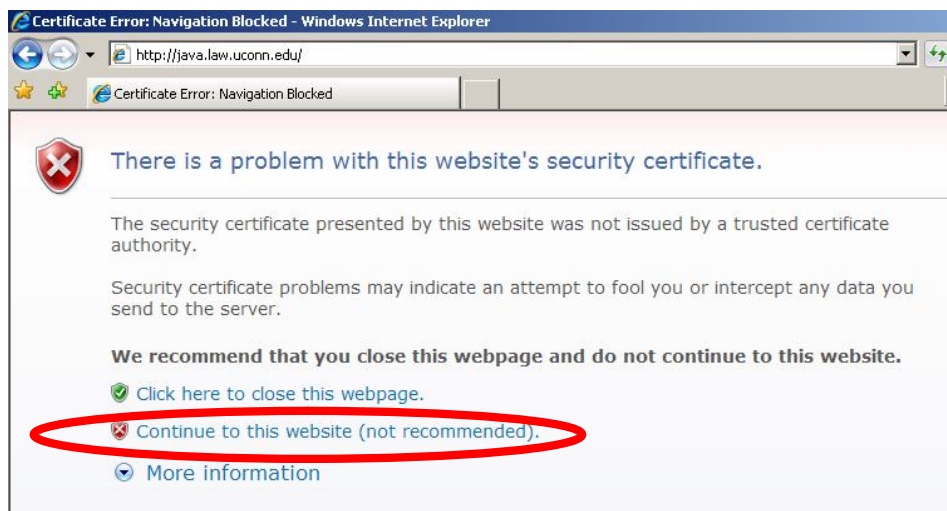
# Importing the Security Certificate using Internet Explorer version 7 or 8

This document shows how to import the security certificate issued by law.uconn.edu to allow access to the Law Mail servers. These instructions are specific to Internet Explorer version 7 or 8.

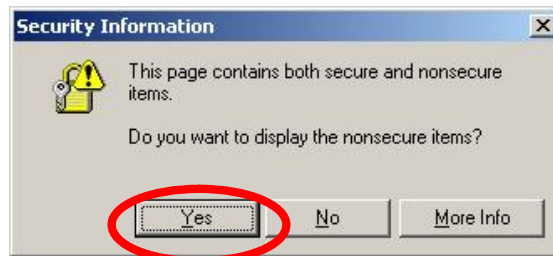
**Note:** If using Windows Vista or Windows 7, you need to run Internet Explorer as an Administrator. Find the Internet Explorer shortcut on the desktop or programs menu, right-click it and select the option "Run As Administrator"

Log in to WebMail using Internet Explorer. After entering your username and password, you receive the window below.

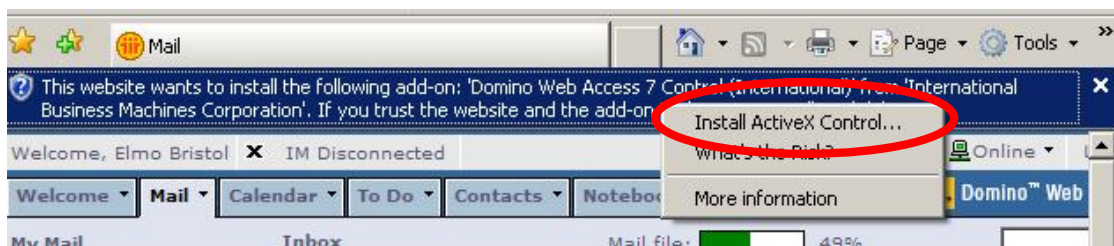
Click "Continue to this website (not recommended)"



(Optional) If you get a security box please click "Yes" to continue



(Optional) If you get a bar across the top that says "This website wants to install the following add-on..." Click on the bar and select "Install ActiveX Control".



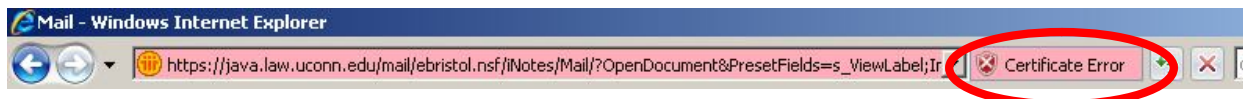
(Optional) Click on Install.



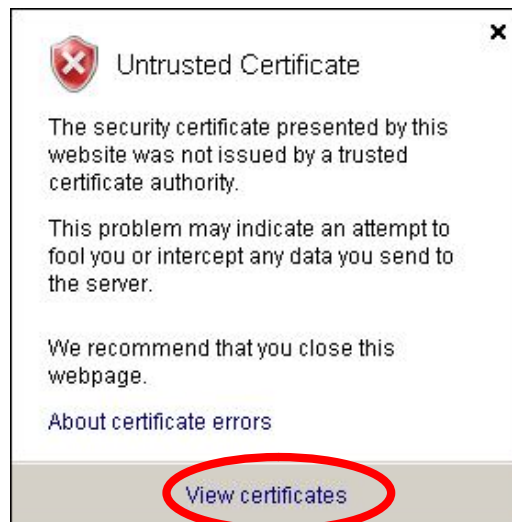
## Importing the Certificate

*(Make sure to follow these instructions exactly as described)*

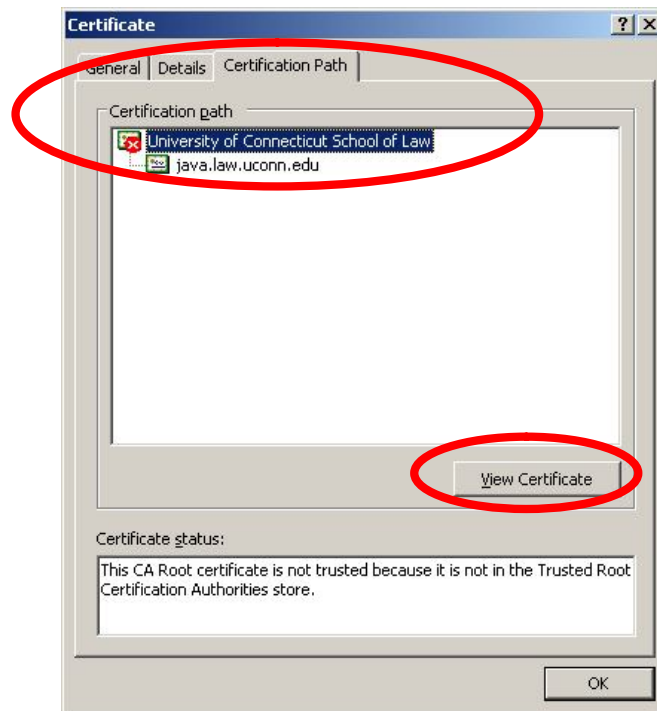
After logging on to your mailbox. You must now install the Trusted Certificate so you will not be prompted next time that it is an untrusted site. To do so, click on Certificate Error on the top of the page.



You will get the following box.  
Click View Certificates.



In the new window, click on the Certification Path tab.  
Highlight "University of Connecticut School of Law" next to the red X then click View certificate. You will then get the certification box again.



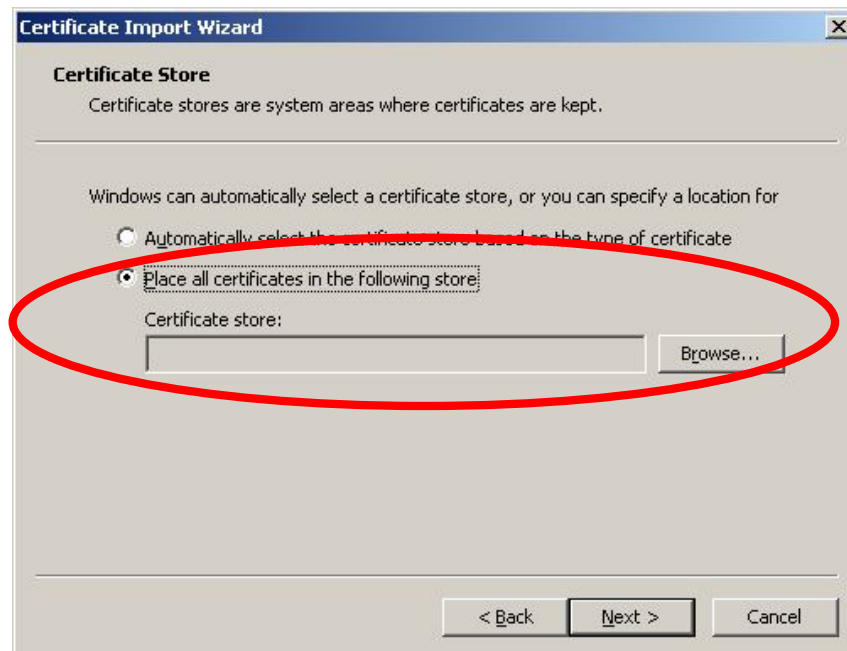
This time click on "Install Certificate"



Click Next.



Select "Place all certificates in the following store" and then click "Browse". You will get this box.



Select "Trusted Root Certification Authorities", click Ok.



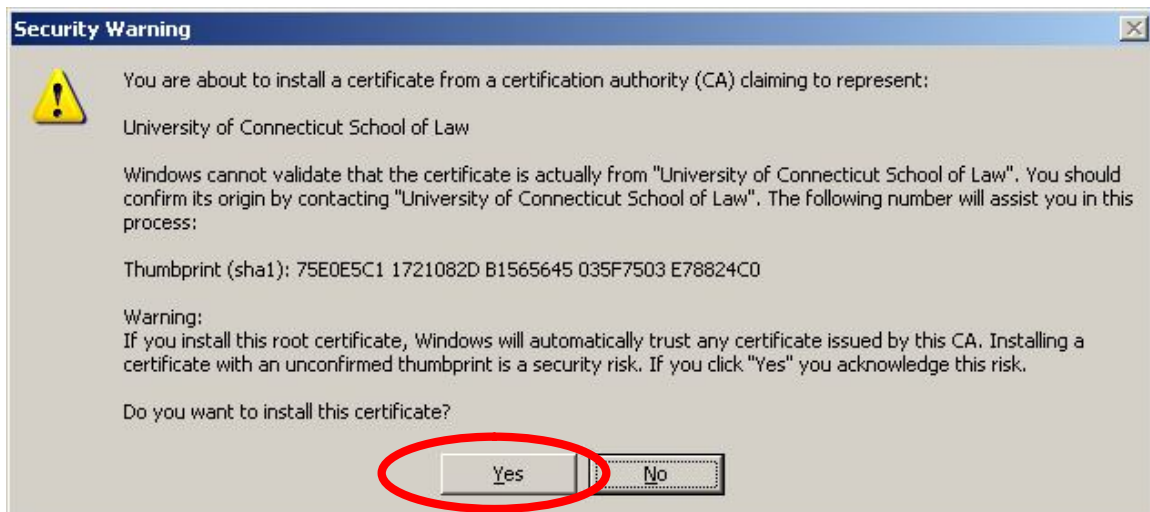
Click Next.



Click Finish.



You will now get the following security warning. Click "Yes" to install the certificate.



Once you click yes you will be prompted with the following stating that the import was successful.



Click Ok to close any open windows.

Log off your mailbox. When you log back in, the certificate error messages should not appear.

